

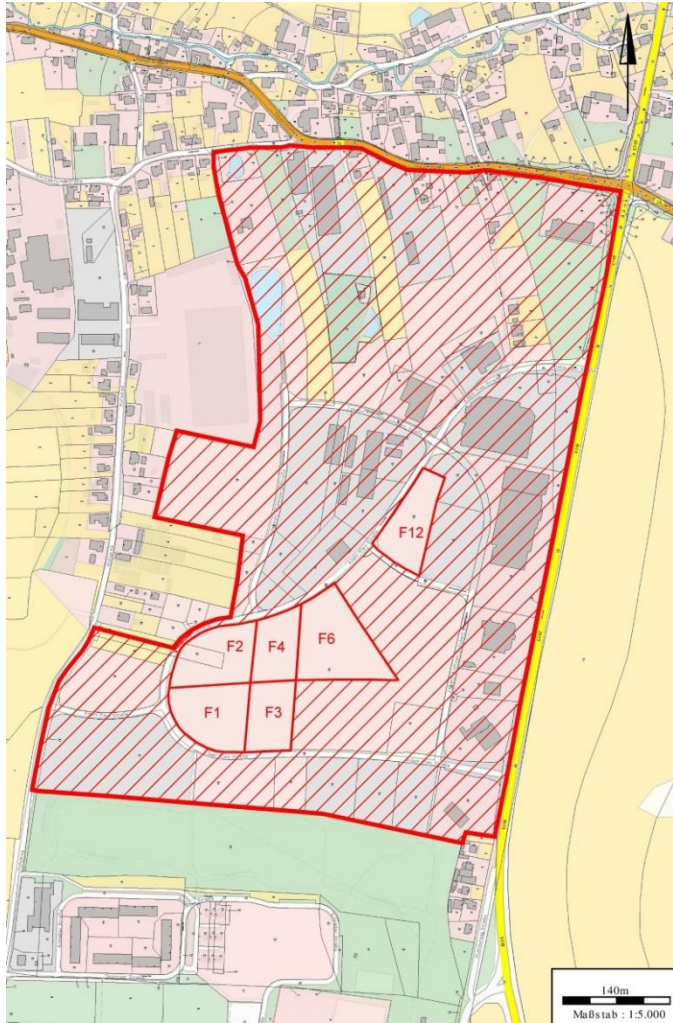


## Business Park „Rumburger Straße“, D-02730 Ebersbach-Neugersdorf, Saxony



location:	situated central, close to Czech Republic (8 km)
transportation:	A-road B96, state road S 148, motor-way A4 in 27 km, cities of Löbau 13 km, Zittau 21 km, Bautzen 29 km and Görlitz 37 km, direct local-transport connection
topography:	sloping easily to the north
type of use:	the legally binding land-use plan describes the area as a business and trading park
total area:	19,6 ha (gross), actually available 3,9 ha (clear)
available sections:	several non-built-up partitions between 4.600m <sup>2</sup> and 10.000m <sup>2</sup> (see next page)
price:	by arrangement





available business units  
(status: may 2018):

F1:	7.200m <sup>2</sup>
F2:	6.600m <sup>2</sup>
F3:	5.000m <sup>2</sup>
F4:	4.600m <sup>2</sup>
F6:	10.000m <sup>2</sup>
F12:	5.600m <sup>2</sup>

established companies : supermarket, hardware store, gasoline station, mechanical engineering, welding technologies, retail/service for pallet carriers, metal constructions, furniture sales, automobile caravan company, automobile trade/service, home entertainment trade/service, solar energy supply, production and distribution of lacquer

development: actually used as grassland; development possible depending on the terms of an existing legally binding land-use plan (key plan "Rumberger Straße")

opening up for dev.: accesses to electr. connection, domestic / waste water and gas are burying under the road

road conditions: fully developed public road, one-side pavements

foundation ground: grown usual, good bearing soil, no bad depts or subterranean damages, land improved

Geographical position of the City of Ebersbach-Neugersdorf (Saxony)





source ref.: public office for geobased information and land survey in Saxony (GeoSN)

We would be pleased to offer our support and provide you with the most possible guidance concerning loans and aid programs. Don't hesitate to contact us!

contact:

Stadt Ebersbach-Neugersdorf  
Reichsstraße 1  
02730 Ebersbach-Neugersdorf

real estates division:

Herr Köhler  
Tel.: +49 (0)3586 763240  
[liegenschaften@ebersbach-neugersdorf.de](mailto:liegenschaften@ebersbach-neugersdorf.de)

business development:

Herr Halang  
Tel.: +49 (0)3586 763213  
[wirtschaftsfoerderung@ebersbach-neugersdorf.de](mailto:wirtschaftsfoerderung@ebersbach-neugersdorf.de)

