



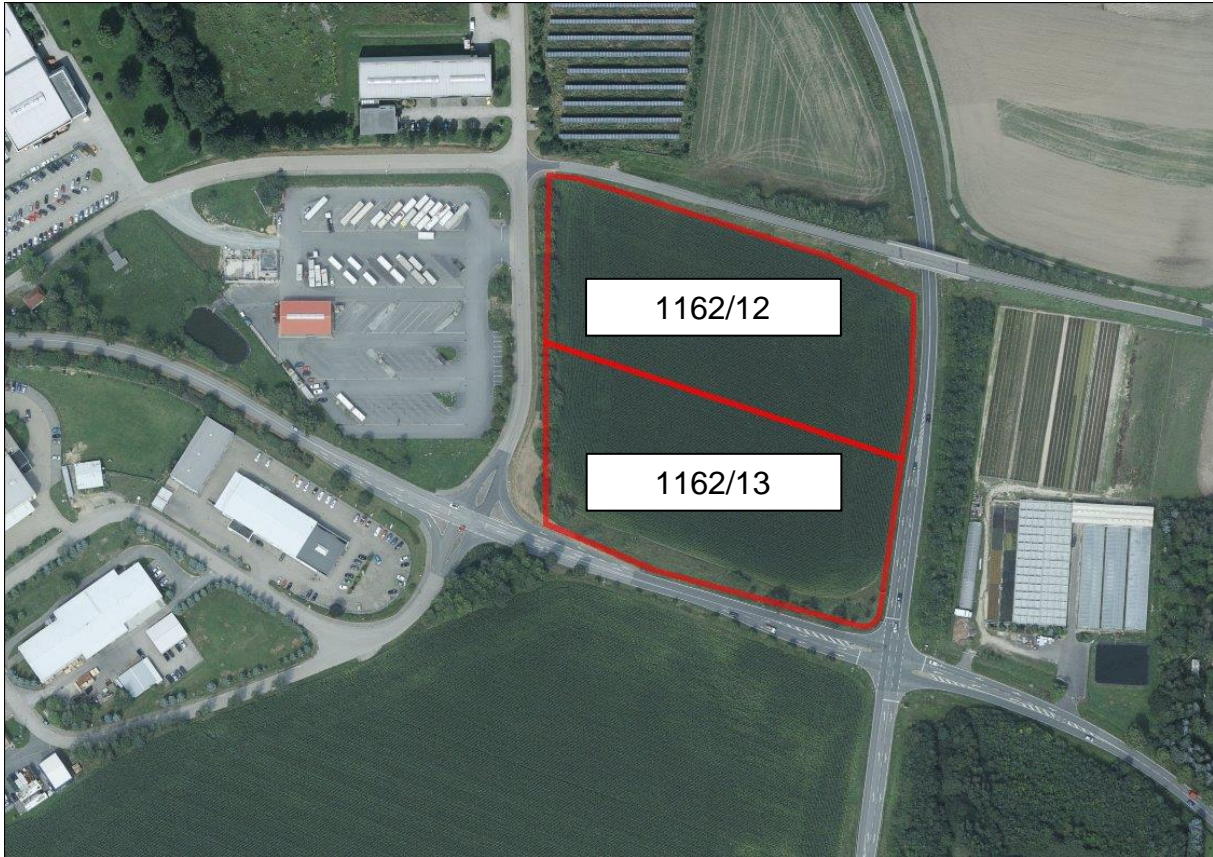
Business Park „Kamerun“, 02727 Ebersbach-Neugersdorf, Saxony



source: Staatsbetrieb Geobasisinformation und Vermessung Sachsen (GeoSN)

location:	situated central, close to Czech Republic (5 km)
transportation:	state road S148, motorway A4 in 31km, cities of Löbau in 17km, Zittau 18 km, Bautzen 33 km, Görlitz 41 km, Liberec 43 km, Dresden 88 km and Prague in 137km
topography:	plain area
type of use:	the legally binding land-use plan describes the area as a business and trading park
total area:	18,3 ha (gross), actually available 3,7 ha (clear)
available sections:	plot field sector 1162/12 (15.308 m ²) plot field sector 1162/13 (15.328 m ²) both fields are municipality area of Eibau
price:	by arrangeme





source: Staatsbetrieb Geobasisinformation und Vermessung Sachsen (GeoSN)

established companies: production of office furnitures, plastics processing, mechanical springs, fruit juice production, logistics, automobile trade

development: actually used as grassland; development possible depending on the terms of an existing legally binding land-use plan (key plan "Business Park Kamerun")

opening up for dev.: accesses to electrical connection, domestic / waste water, gas are burying under the road, local wideband 50 Mbit/s

road conditions: fully developed public road

foundation ground: grown usual, good bearing soil, no bad depts or subterranean damages, land improved





geographical position of the city of Ebersbach-Neugersdorf (Saxony)



source: Staatsbetrieb Geobasisinformation und Vermessung Sachsen (GeoSN)

We would be pleased to offer our support and provide you with the most possible guidance concerning loans and aid programs. Please don't hesitate to contact us!

contact:

Stadt Ebersbach-Neugersdorf
Reichsstraße 1
D-02730 Ebersbach-Neugersdorf
Germany

real estates division:

Frau Hilse
Tel.: +49 (0)3586 763240
liegenschaften@ebersbach-neugersdorf.de

business development:

Herr Halang
Tel.: +49 (0)3586 763213
wirtschaftsfoerderung@ebersbach-neugersdorf.de

